

## DLM3000HD Firmware Update Procedure

### 1. Overview

This document describes how to update the firmware on DLM3000HD.

### 2. Notes

- To check your current firmware version, press UTIL key -> Overview soft key -> System Overview soft key. The Overview/Setup Information dialog will appear and show the current firmware version.
- It takes up to about 5 minutes to complete the firmware update. Do not turn off the power while the firmware is being updated, or it will cause a failure.
- After the updating process is completed, regardless of whether it succeeds or fails, the instrument will automatically restart. Please wait until the restart completes.
- Use the power switch on the front panel to “Turn ON” and “Turn OFF” the instrument.
- When the update process is completed successfully, the settings of the instrument are initialized. Save the settings to an external storage device beforehand and load them to the instrument after the firmware update succeeds, as necessary. Although files in the internal storage will not be lost, it is recommended to backup them to an external storage medium just in case.
- When the firmware update fails, the firmware version and the settings of the instrument remain the same as before attempting the update. You can use the instrument as it is without making any setting changes to it.

### 3 . Firmware update procedure

There are two ways of updating: one is to use an external USB storage device and another is to use the internal storage.

#### 3 -1. Updating using an external USB storage device

1. Unzip the downloaded zip file and make sure that the unzipped file contains the following items.  

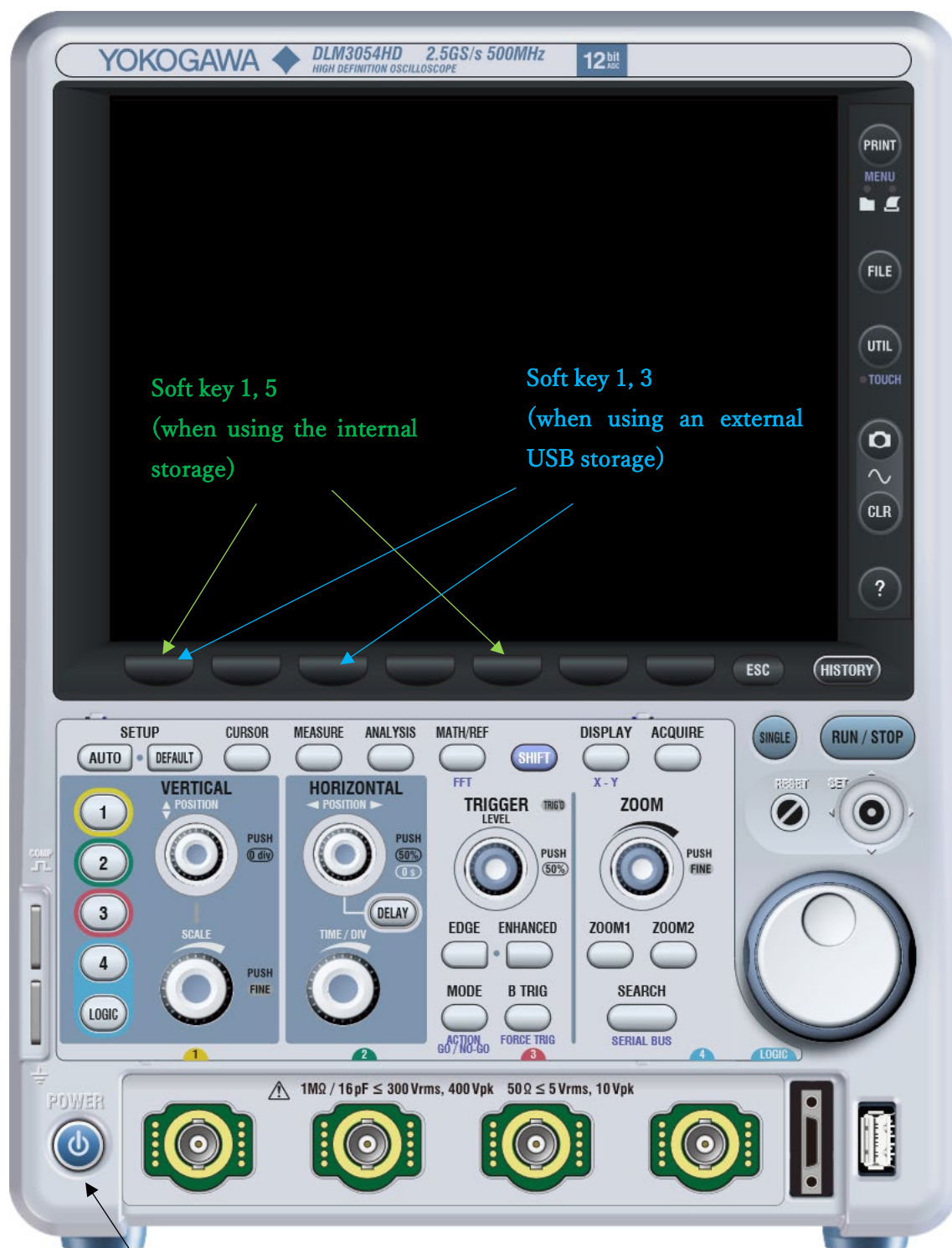
read_me_EN.pdf	: This document (DLM3000HD Firmware Update Procedure)
read_me_JP.pdf	: DLM3000HD Firmware Update Procedure(Japanese)
d1m3000hd.dat	: File that contains the firmware
2. Copy “d1m3000hd.dat” to the root directory of a USB storage device.  
Connect this USB storage device to a USB port on the front or back of the DLM3000HD and remove any other USB storage devices.
3. Turn OFF the instrument if it is ON.
4. Turn ON the instrument while pressing the soft key 1 and soft key 3 at the same time (see Figure 1). Release the soft keys when the yellow messages start to appear at the upper left of the screen, as shown in Figure 2.  
If the yellow messages do not appear on the screen (see Figure 3), the instrument is normally started and the firmware update is not initiated. Wait for the waveform screen to appear, turn off the power, and then repeat step 4.
5. The update progress is shown on the left side of the screen shown in Figure 2. It takes up to about 5 minutes to complete the firmware update. After the updating process is completed, regardless of whether it succeeds or fails, the instrument will automatically restart. Please wait until the restart completes.
6. Refer to "3-3. Check the firmware update result" for the procedure after step 5.

### 3 -2. Updating using the internal storage

1. Unzip the downloaded zip file and make sure that the unzipped file contains the following items.  

read_me_EN.pdf	: This document (DLM3000HD Firmware Update Procedure)
read_me_JP.pdf	: DLM3000HD Firmware Update Procedure(Japanese)
d1m3000hd.dat	: File that contains the firmware
2. Turn ON the instrument. Copy “d1m3000hd.dat” to the root directory of the internal storage (Flash\_Mem). You can do so via a network using the FTP server function or the Net Drive function. You can also use a USB storage device for it. For the details of each function, please refer to the product IM.
3. Turn OFF the instrument.
4. Turn ON the instrument while pressing the soft key 1 and soft key 5 at the same time (see Figure 1). Release the soft keys when the yellow messages start to appear at the upper left of the screen, as shown in Figure 2.  

If the yellow messages do not appear on the screen (see Figure 3), the instrument is normally started and the firmware update is not initiated. Wait for the waveform screen to appear, turn off the power, and then repeat step 4.
5. The update progress is shown on the left side of the screen shown in Figure 2. It takes up to about 5 minutes to complete the firmware update. After the updating process is completed, regardless of whether it succeeds or fails, the instrument will automatically restart. Please wait until the restart completes.
6. Refer to "3-3. Check the firmware update result" for the procedure after step 5.



Power switch

Figure 1. Keys used for firmware update

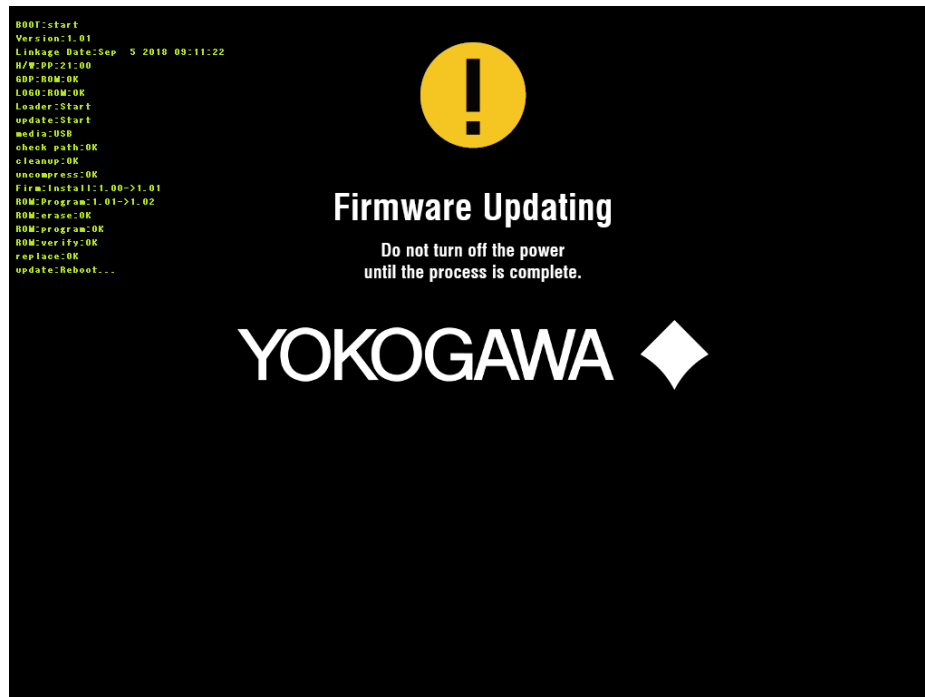


Figure 2. Display during firmware update



Figure 3. Display when the instrument is normally started (firmware update is not initiated.)

### 3 -3. Check the firmware update result

After restart, the firmware update result (either Figure 4, Figure 5 or Figure 6) will be shown.

When Figure 4 is shown, the firmware update is successful. If you have backed up files, write them back to the instrument as necessary.

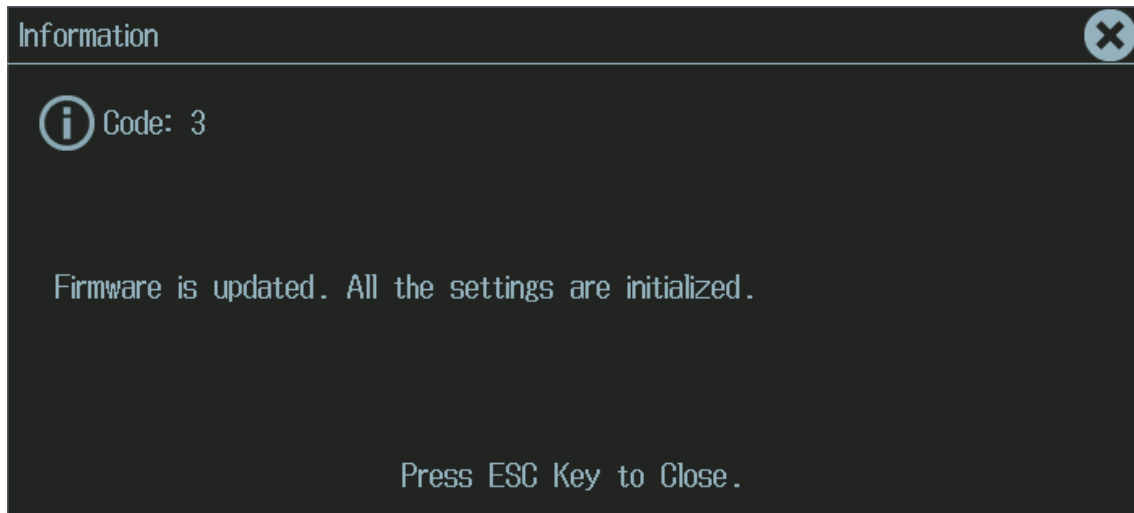


Figure 4. Firmware update is completed successfully.

When Figure 5 is shown, the firmware update is failed. The firmware version and the settings of the instrument are the same as before attempting the update. When trying to update the firmware again, make sure that "dlm3000hd.dat" to be used is the latest one.

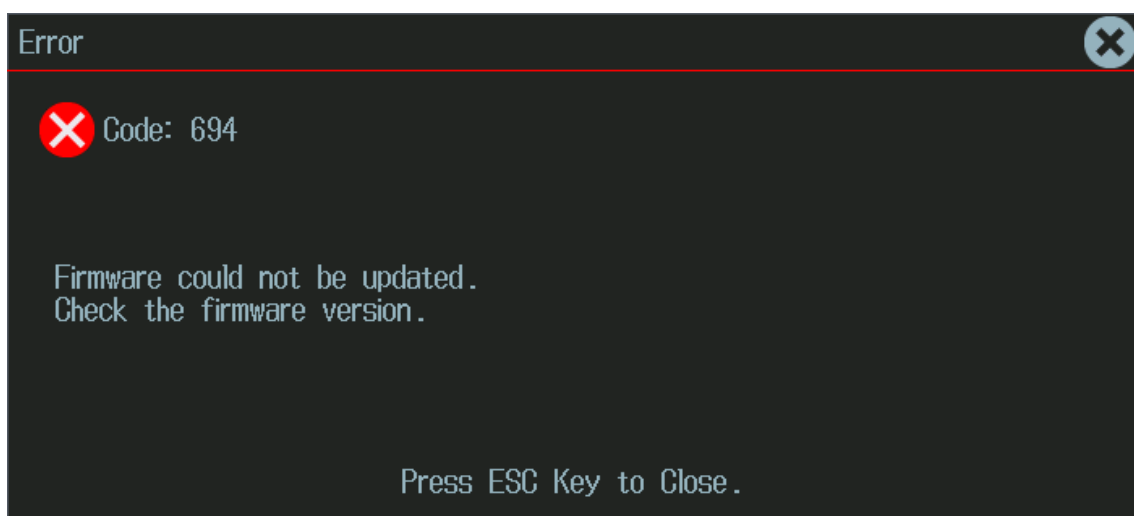


Figure 5. Firmware update is failed. (the current firmware is the latest version.)

When Figure 6 is shown, the firmware update is failed. The firmware version and the settings of the instrument are the same as before attempting the update. When trying to update the firmware again, make sure that “d1m3000hd.dat” obtained is appropriate. Also, when you have used an USB storage device for the firmware update, consider replacing the USB storage device with another one.

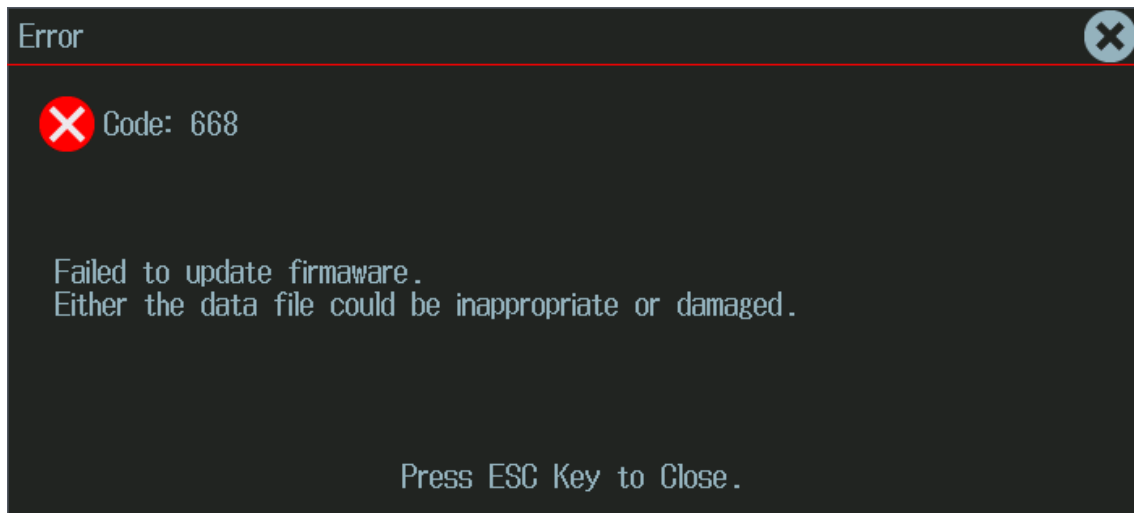


Figure 6. Firmware update is failed. (“d1m3000hd.dat” is inappropriate.)